



£390,000 | Leasehold

Wellspring Crescent, Wembley, Middlesex, HA9 9UZ

Charles
Russell
ESTATE AGENTS

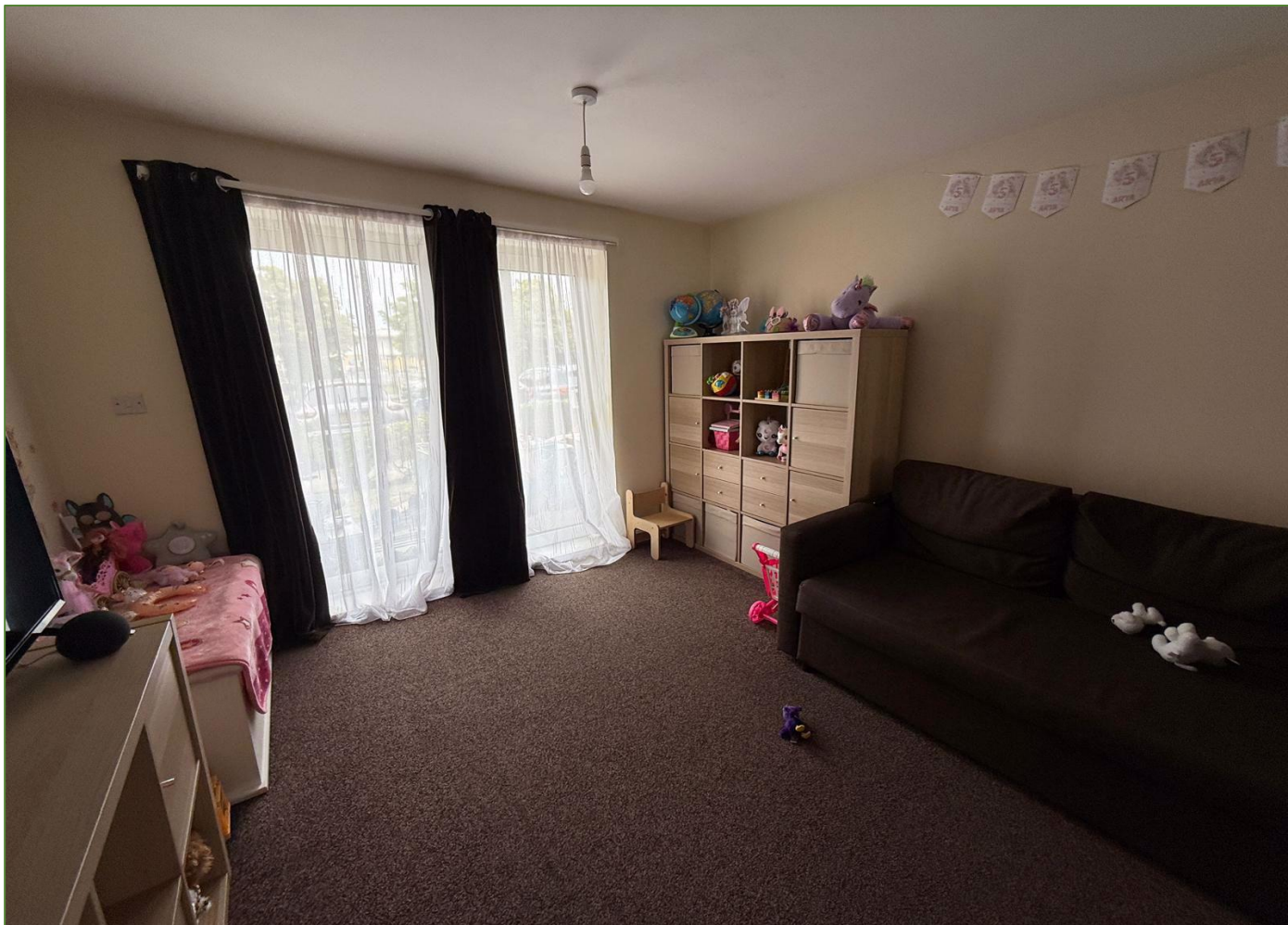
Key Features & Description

- Ground Floor Flat
- Allocated Parking
- Walking Distance from Transport Links
- Two-Bedroom Flat
- Spacious Bedrooms
- Family Bathroom
- Good Central Heating System
- Fully tiled bathroom
- Easy access to shops, schools and amenities

Well presented two bedroom flat located in the heart of Wembley Park, just a short stroll to the tube station. This ground floor spacious two double bedroom apartment for sale available chain free.

Boasting a large open plan living space with a fully fitted modern kitchen. All presented in modern condition throughout. This property beams with natural light due to the large, creating a relaxed atmosphere.

This property also features a secure balcony space which gives you the option to relax with your own outside space. Along with parking, communal gardens to share with your community and park opposite the block which attracts the child friendly atmosphere ideal for





Living Room: 14' 3" x 10' 10" (4.35m x 3.30m)

Spacious with carpet flooring, painted walls and painted ceiling, radiator on the wall and inset ceiling spotlights.

Kitchen: 8' 10" x 6' 5" (2.69m x 1.95m)

Base and wall fitted wooden kitchen units, inset stainless steel sink electric cooker and oven, with space and plumbing for washing machine. Wooden flooring, single glazed window.

Bedroom 1 : 10' 6" x 9' 11" (3.19m x 3.01m)

Carpet flooring, front aspect UPVC double glazed windows, wall mounted radiator, painted walls and ceiling.

Bedroom 2 : 14' 9" x 9' 0" (4.5m x 2.75m)

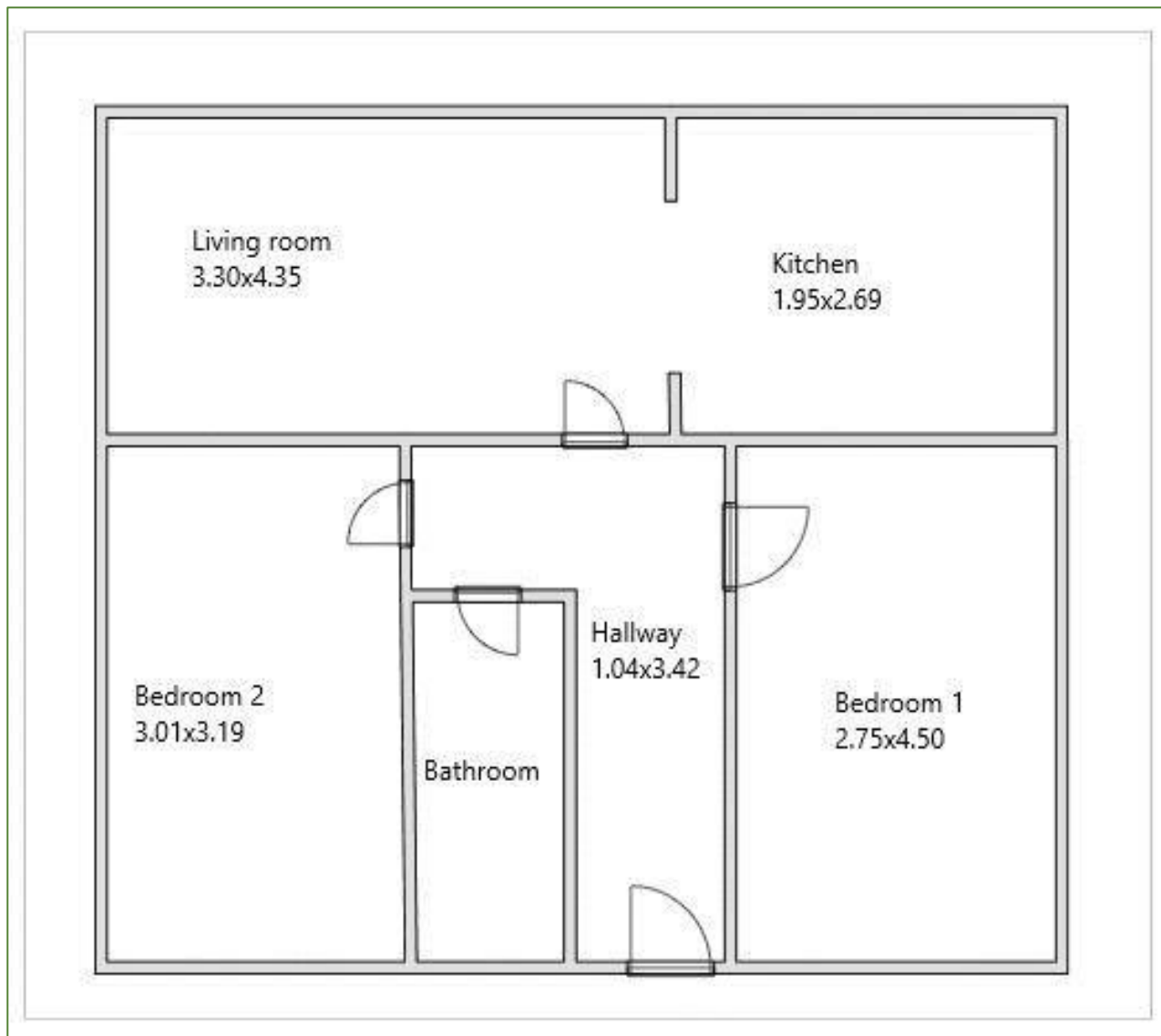
Carpet flooring, front aspect UPVC double glazed windows, wall mounted radiator, painted walls and ceiling.

Family Bathroom:

Well maintained bathroom, with fully tiled walls and floor, bathtub and radiator.



Score	Energy rating	Current	Potential
92+	A		
81-91	B		
69-80	C	70 C	80 C
55-68	D		
39-54	E		
21-38	F		
1-20	G		



We have prepared this property particulars as a general guide to a broad description of the property. We have not carried out a structural survey and the specific fittings have not been tested. All pictures, measurements and floor plans are given as a guide only.

Charles Russell Estate Agents
Tel: 020 8863 6269

10 High Street Wealdstone Harrow Middlesex HA3 7AA
enquiries@charles-russell.com
<https://www.Charles-Russell.Com/>

Chamberlain Estates Ltd T/A Charles Russell Estate Agents - Registered in England No: 2405145 - VAT No: 769 3626



**Charles
Russell**
ESTATE AGENTS